

eBATH 1000

Cross-contamination is a big fear that nursing management has today. Germs reside inside the whirlpool pump and on the surfaces of the tub during and after each resident's bath. If disinfectant is not applied to the pipes, motor and surfaces of the tub between each bath, the germs could spread between residents.

Other whirlpool bathing systems require staff compliance to apply the disinfectant and to leave it exposed for the correct amount of time between baths. Disinfecting a whirlpool bathtub properly can require ten or more steps, and nurses aides often aren't trained correctly and rarely have the time to follow the complicated procedures.

If you're worried about cross-contamination at your facility, the eBATH1000 whirlpool bathing system is the answer!

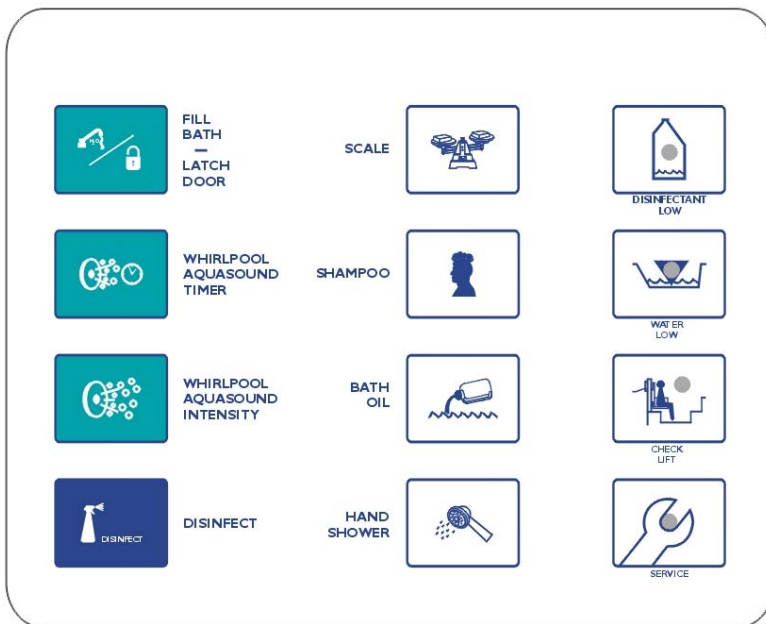
Its features ensure proper cleaning between each bath and are not offered by any other competitor on the market today!

- At the push of a button, the system automatically mixes the right amount of disinfectant, dispenses it into the motor and pipes, leaves it in for the correct time (programmed by management) and rinses out.
- The system will not allow disinfectant to be discharged while a resident is bathing.
- The system will not run the next bath until it has gone through the full disinfectant cycle to assure disinfection between each and every bath.
- Assures that the system is not out of chemicals when the next disinfectant cycle is run by not filling when it detects an empty disinfectant bottle.



The eBATH1000 is designed to be dependable, reliable and easy to use. Other features include:

- Safety mechanisms to prevent the tub from overflowing
- Water and fill temperature is accurately and automatically maintained
- Integrated hydraulic lift with hand-held control
- Lightweight, easy-access removable door
- Automatic touch-pad control panel with LCD display
- Automatic water-fill and shut-off
- Electronic timer
- Anti-scald temperature control
- Automatic bath-oil and shampoo dispensers
- Shower hand control
- Low water indicator
- Automatic safety check for fill
- Automatic self-diagnostic system
- One year warranty on parts



Tub operation at the touch of a button



Enneking Medical, Inc.

888-685-9699

www.ennekingmedical.com

Space-saving design allows the eBATH to fit into even the smallest bathrooms

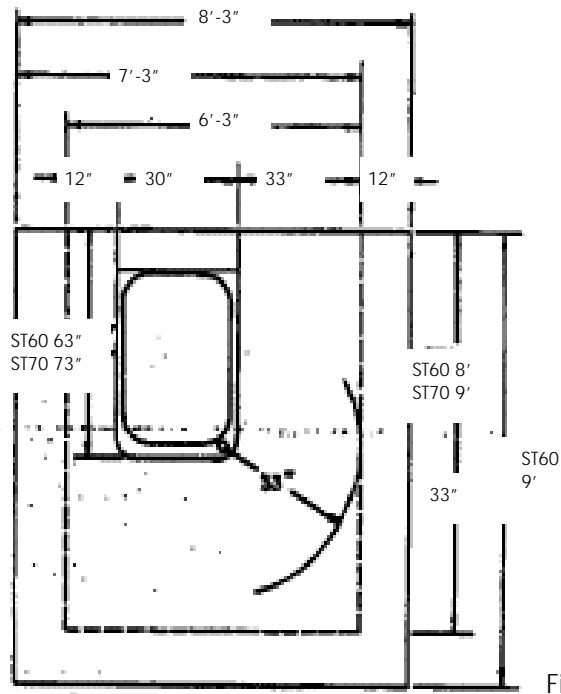


Figure 1

Dimensions of Tub: 30" wide x 63" Long x 52" high, tub edge is 36" High.

Weight of Tub: 485 lbs.

Water Capacity: 55 US gal (with resident in tub)

Minimum Room Size: 87" x 108"

Recommended Door Size: 36"

Electrical

- Voltage 120 VAC
- Amperage 20 Amps
- Ground Bonding All metal components

Resident Cleaner Options

- 1 Hp 120 VAC Pump with 2 to 3 jets, 85gpm. One jet located in perennial area for maximized cleaning. Air agitation is operator controlled
- AquaSound cleaning device (40 kHz, 120 VAC, 200 Watts with intensity levels from 10 to 100 milli-watts per square centimeter) for excellent cleaning with little disinfection.

Plumbing

- All fill plumbing is 3/4" type L copper tubing.
- 20 gpm thermostatic mixing valve is ASSE 1017 listed.
- Pop-up drain with built in overflow (1 1/2 -2 inch options).
- All plumbing has back flow protection comprised of code accepted air gap and atmospheric vacuum breakers.

Scale (Option)

- Integrated scale displays resident weight on electronic display accurate to within ±1% full scale.
- Powered by main controller and doesn't require batteries.

Door (removable)

- Provides Lo-Lift transfers into tub.
- Patented, durable static seal not pneumatic seal prone to damage.
- Locks when tub has been pre-filled and is safely interlocked via water level sensors which do not allow door to open until tub is drained.
- Top Width 39 inches
- Depth 22 1/2 inches
- Optional Right, Left hand or No-Door.

Lift

- Right-hand or left-hand controls.
- Travel Stroke 24"
- Seat bottom clearance 4 1/2" over tub rim height.
- Lifting Capacity 350 lbs.
- Lift controlled via convenient hand control with backup rocker switch.
- Interlocked hook-up provides two backup sensors for proper hook-up and resident safety.
- All exposed lift and transfer chair components are manufactured of Electro-polished stainless steel

Transfer Frame & Seat

- Frame
 - Height 19"
 - Width 19 3/4"
 - Length 19 5/8"

Construction 1" ridged welded stainless steel.

- Stainless steel frame
- Commode style seat with full perennial opening.
- Seat removable for easy and thorough cleaning.
- Swivel Seat 280-degree swivel range
- Foot Rests Fold up and swing away.